

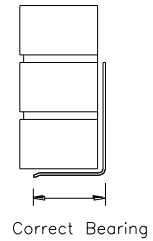
Single Leaf Lintels



Wincro produce a wide range of single leaf lintels in stainless steel. They are designed to carry a single leaf, usually the external leaf of a cavity wall.

CHECKLIST

- Ensure supplied lintel length will provide a minimum 150mm bearing at each end.
- Lintel is correct width for the wall thickness; masonry should not overhang the lintel by more than 25mm.
- Lintel is structurally undamaged, i.e. has not been bent in transit / damaged on site.

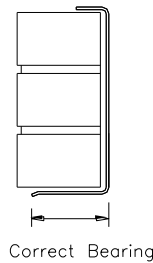


Correct Bearing

WLSLA Lintel

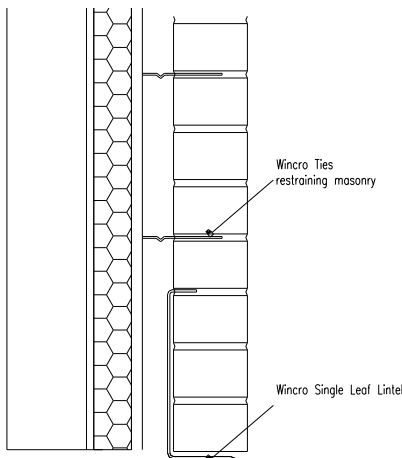
INSTALLATION

- Lintel should always bear onto a thin layer of bricklaying mortar, on top of full bricks or blocks with at least 150mm end bearing. The end bearings should ensure that the lintel will be installed level.
- A separate damp proof course can be incorporated if required.
- Suitable wall ties/restraints should be provided at a recommended maximum horizontal spacing of 450mm within 300mm above the lintel support (in accordance with BS 5628-1). See below detail.
- Masonry should always be fully built into the back of the WLSLA & WLSLC type lintels.
- Do not lay more than 1.5 metres of wall above a lintel in any 24-hour period in accordance with BS 5628: Part 3: 2005.



Correct Bearing

WLSLC Lintel



Using Props during construction

- Single leaf lintels **must** be propped during construction until the supported masonry is fully cured.
- Props should support the base of the lintel to as to prevent the lintel from twisting.
- Prior to the removal of the props, it is advisable to build at least 600mm of brickwork above the lintel and then leave to cure for at least 24 hours. This will enable the lintel and supported panel to gain sufficient strength.

General

- Stainless steel lintels should not require any additional surface protection, but cleaning is recommended to remove any surface contaminants.
- Lintels may be painted if desired. It is advisable to use a stainless steel etch primer prior to top coating.
- Never cut or modify lintels in any way without approval from our Technical department.

GENERAL

All Wincro products are produced from Type 1.4301 (304) Stainless Steel u.n.o. and are generally produced from sheared plate. As with all similar industrial fabrications, these may present sharp edges and suitable personnel protective equipment should be worn at all times during handling and installation. In all cases, installation should be entrusted to appropriately qualified/experienced persons.

All contact between dissimilar metals must be isolated using isolation patches/washers.

All bolts specified must be installed and torqued to Manufacturers Recommendations / Guidelines.

The Construction applications and details provided in this guide are indicative only.