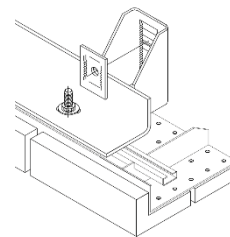


LBS Brick Slip Soffit System



Wincro LBS Brick Slip Soffit system has been developed for use with Wincro masonry support systems to provide a simple and quick-fix solution to creating brick faced soffit details.

LBS should only be used with Wincro bolts and Wincro masonry support systems, and should be fixed in accordance with the recommendations provided in this guide.

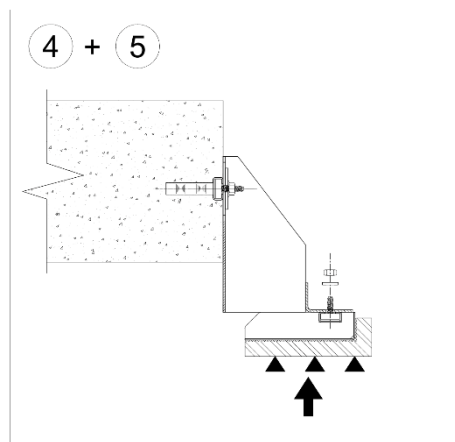
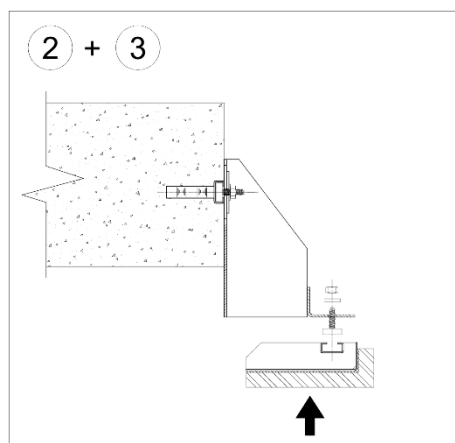
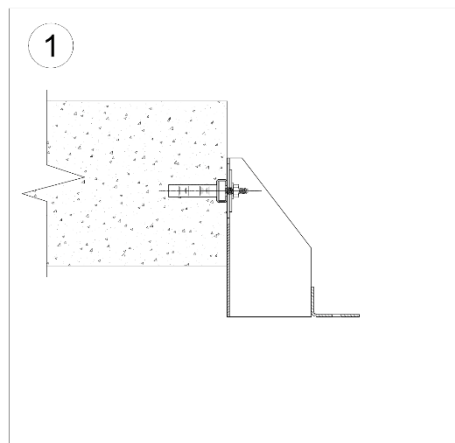


INSTALLATION PROCEDURE

1. Install the WSC masonry support system in accordance with the Wincro WSC Support Systems Installation Guide. Ensure the support system is correctly lined, leveled and fixing bolts are fully torqued.
2. Position the correct LBS unit (refer to supplied installation drawings) just under the support angle, noting the position of the slots in the angle and channel in the LBS unit.
3. Install the supplied LBS T-head bolts into the LBS channel in the top of the unit and align with the slots in the angle.
4. Lift the LBS unit up to the underside of the masonry support angle so the T-head bolts pass through the slots in the angle and suitably prop/support.
5. Add the supplied washer and nut to the bolts, and finger tighten onto the angle. Take care to ensure that the T-head bolt is fully turned and engaged in the channel.
6. Check alignment and levels – make minor adjustments as needed.
7. If shimming is required between the angle and the LBS unit, add horseshoe shims.

Note: these must extend for the full contact area between the angle and LBS unit.

Note: the supplied T-head bolts should have a minimum of two threads visible above the nut when fully fastened. In the rare occurrence that shimming has reduced this clearance, longer bolts will be needed. Contact Wincro on 0114 242 2171 for longer bolts.



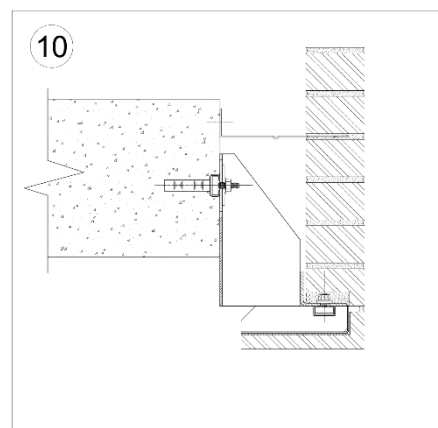
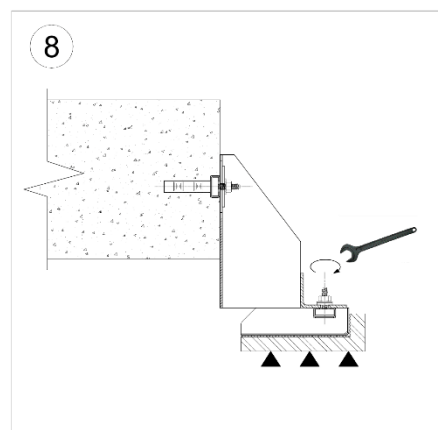
LBS Brick Slip Soffit System



8. When adjustments are complete, fully tighten and torque the supplied T-Head bolts to 20Nm.
9. Remove the prop/supports.
10. Brickwork can now be laid onto the Wincro masonry support angle in accordance with normal bricklaying practice and the Wincro WSC Support Systems Installation Guide.

Note: Any movement joints associated with soffit hung details should be below the soffit unit. Compressible material should be placed below the soffit unit and not between the angle and soffit unit.

11. Point up joints in soffit unit to match main brickwork.



SAFETY PRECAUTIONS

Wincro steel products are produced from sheared plate. As with all such industrial fabrications, these may have sharp edges. **Suitable personal protective equipment should be worn at all times during handling and installation.**

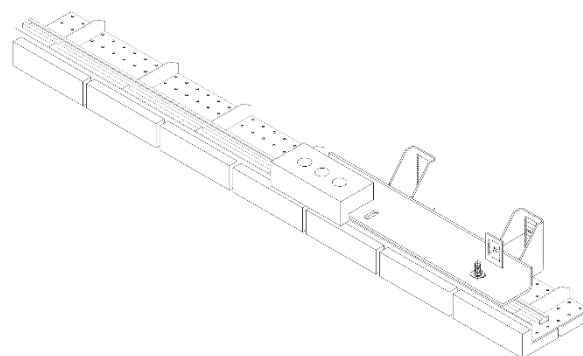
STORAGE AND CARE INSTRUCTIONS

Wincro LBS Brick Slip Soffit units perform a non-structural function.

Care must be taken when handling the units to avoid deformation and damage to the brick faced slips. Units should be stored clear from the ground on suitable supports, to avoid contamination and damage.

CONTACT

If you require any further advice or guidance, please contact our technical services team on 0114 242 2171.



GENERAL

All Wincro products are produced from Type 1.4301 (304) Stainless Steel u.n.o. and are generally produced from sheared plate. As with all similar industrial fabrications, these may present sharp edges and suitable personnel protective equipment should be worn at all times during handling and installation. In all cases, installation should be entrusted to appropriately qualified/experienced persons. All contact between dissimilar metals must be isolated using isolation patches/washers. All bolts specified must be installed and torqued to Manufacturers Recommendations / Guidelines. The Construction applications and details provided in this guide are indicative only.