

Parapet Post Design Sheet



To order the Wincro Parapet posts as quoted, please complete this sheet fully. *NB- always use One sheet per post.*
 These details will enable our designers to produce approval drawings prior to manufacture. Please note; If all the information is satisfactory to proceed to manufacture*, we will do so without issuing drawings, unless you specifically want to review by ticking () the box here > (* to meet your delivery schedule)

Company: _____

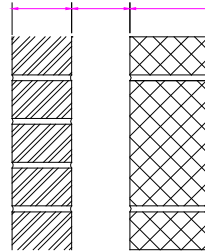
Site Address: _____

Tel No: _____

Fax No: _____

Order No. _____

1. Masonry Construction



Brick = mm

Cavity = mm

Block = mm

2. Drawings attached Yes No
 Please attach relevant drawings showing section through building if possible.

3. First Tie Position
 Please state dimension from base (SSL/TOS) to first tie position to suit coursing - (see 9 below). mm

4. Parapet Post Type (tick)

Angle Type

Channel Type

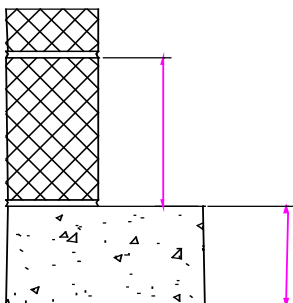
5. Quantity required
 Please state number of parapet posts required to this design.

6. Mark Number
 (for reference)

7. Section Size
 eg. 130 x 70 x 6

8. Height
 Please state dimension from base (SSL/TOS) to top of masonry panel. mm

9. Base Connection - Tick the applicable base detail from the sketches below & complete all relevant dimensions. Please note we will always need to know thickness/depth of structural edge and any floor finishes to accommodate the heavy duty base connection.



RC Concrete Slab
 Thickness? _____ mm

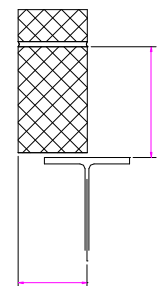
Hollowcore/PCU
 Thickness? _____ mm
 Filled End Cores? – Yes/No

Screed to Slab
 Thickness? _____ mm

Steel UB/UC
 RHS/SHS
 PFC

* State Beam Size?
 = _____

* State Offset?
 (Centreline of beam to cavity side of blockwork)
 = _____



10. Special Requirements – advise any special requirements, e.g. handrail loading?